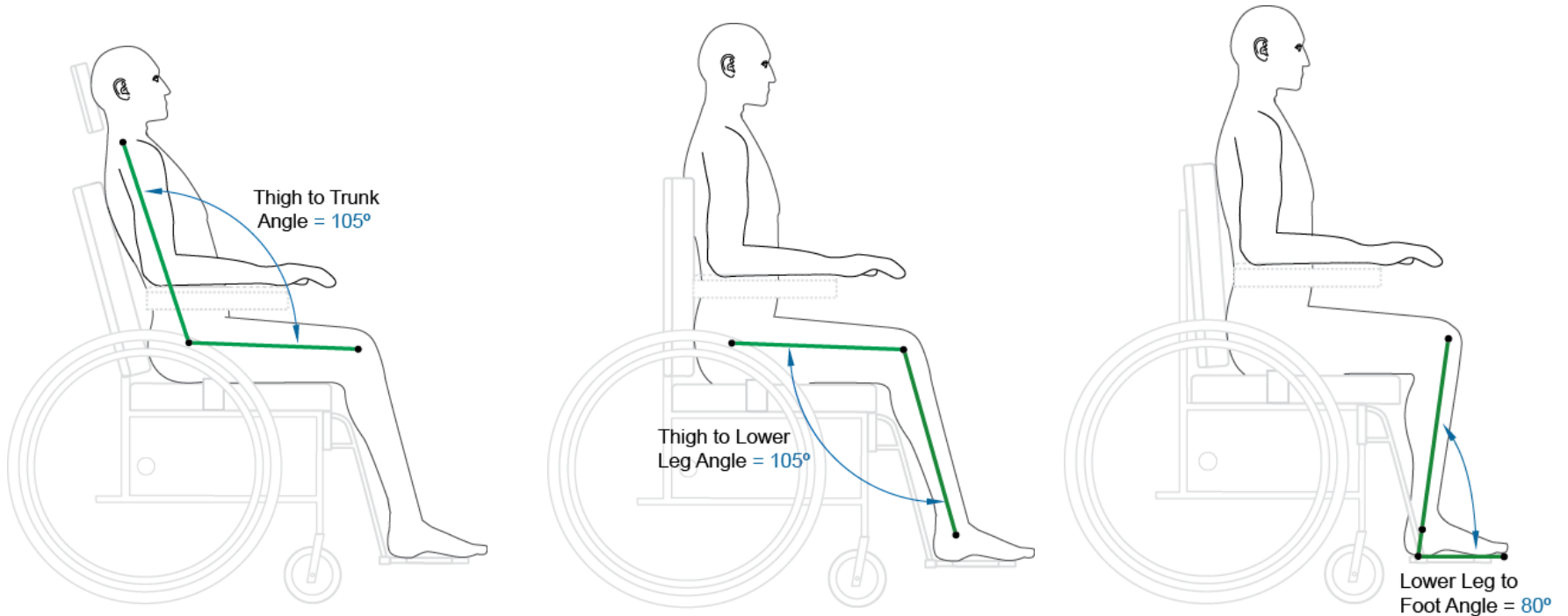


Relative Body Segment Angles

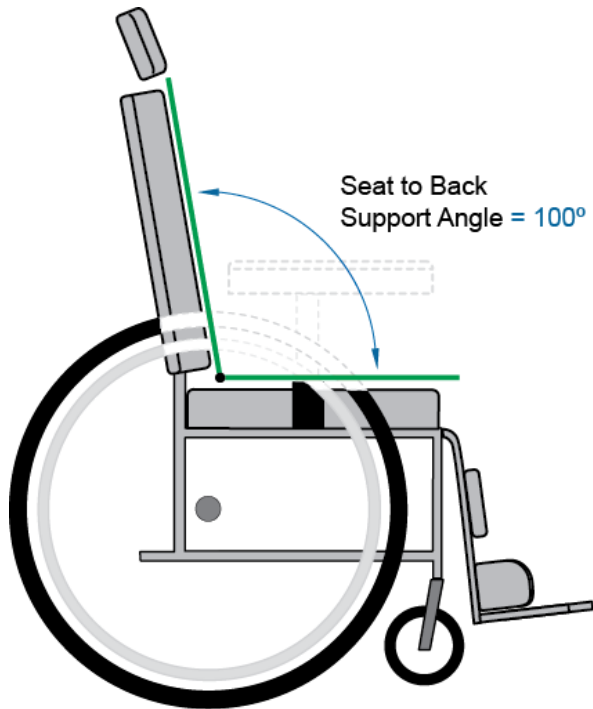


THIGH TO TRUNK ANGLE

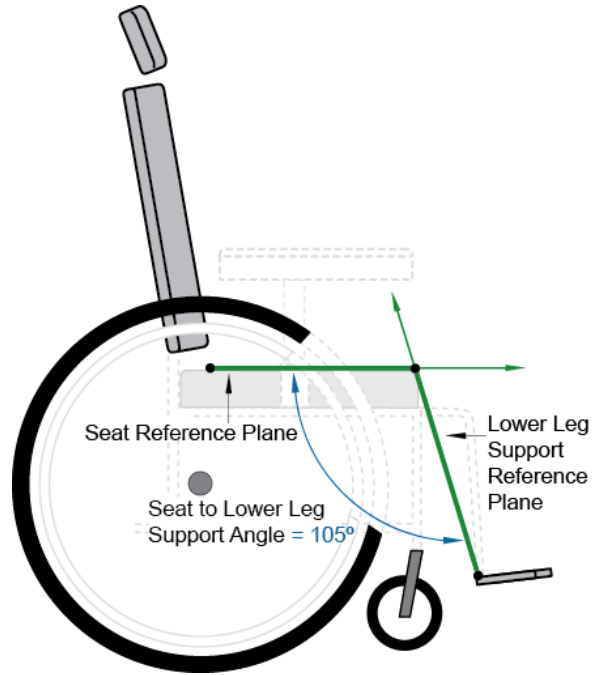
THIGH TO LOWER LEG ANGLE

LOWER LEG TO FOOT ANGLE

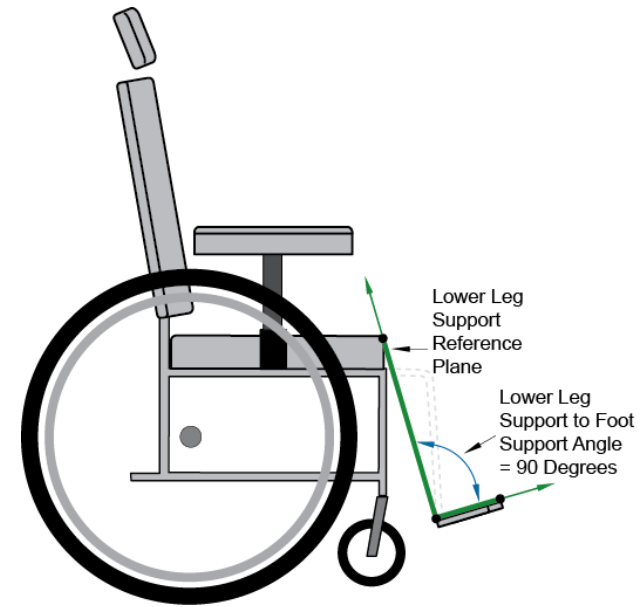
Relative Seating Support Surface Angles



SEAT TO BACK SUPPORT ANGLE

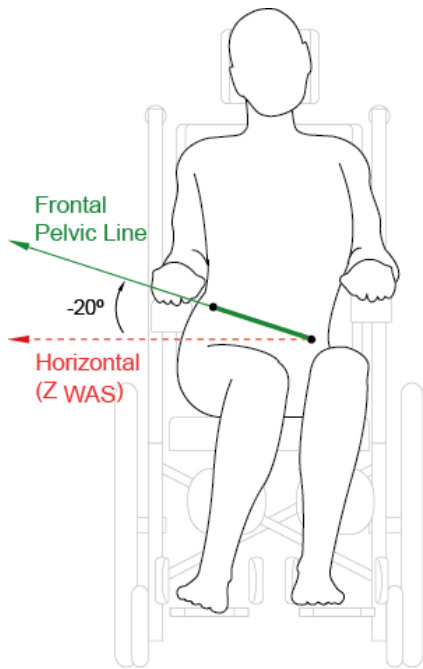


SEAT TO LOWER LEG SUPPORT ANGLE

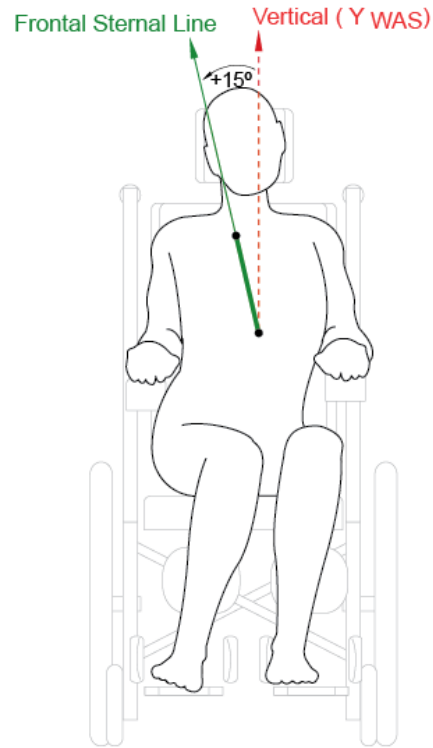


LOWER LEG SUPPORT/FOOT SUPPORT ANGLE

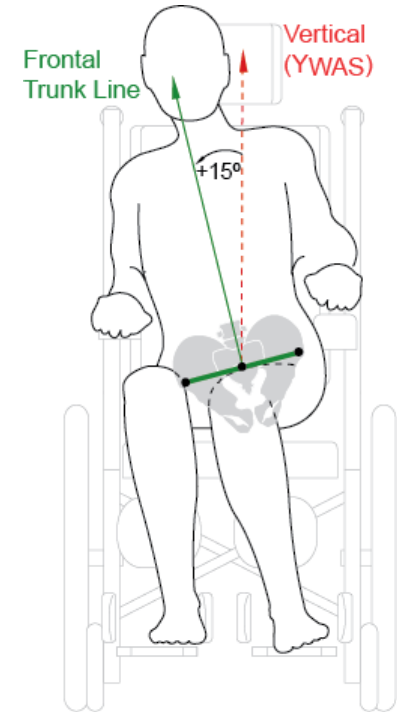
Frontal Body Segment Angles



FRONTAL PELVIC ANGLE

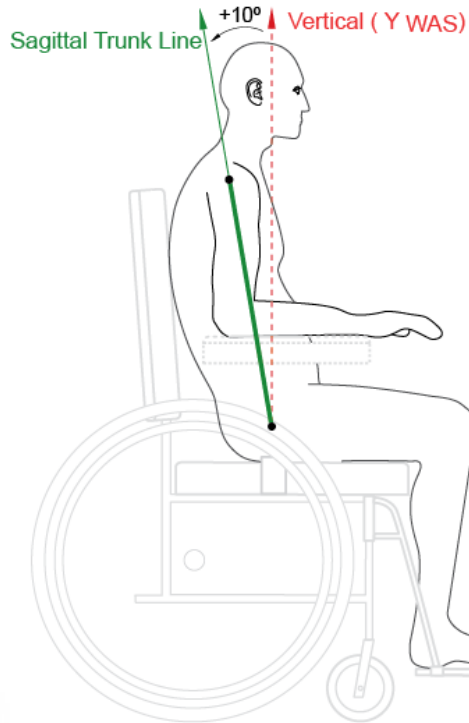


FRONTAL STERNAL ANGLE

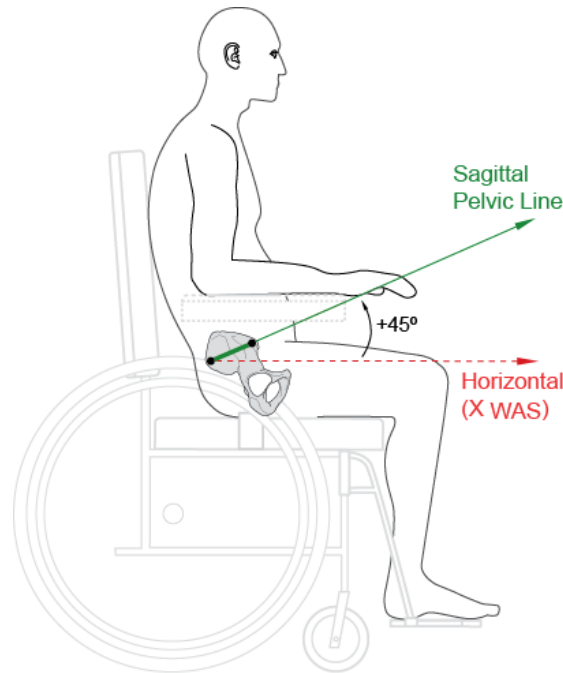


FRONTAL TRUNK ANGLE

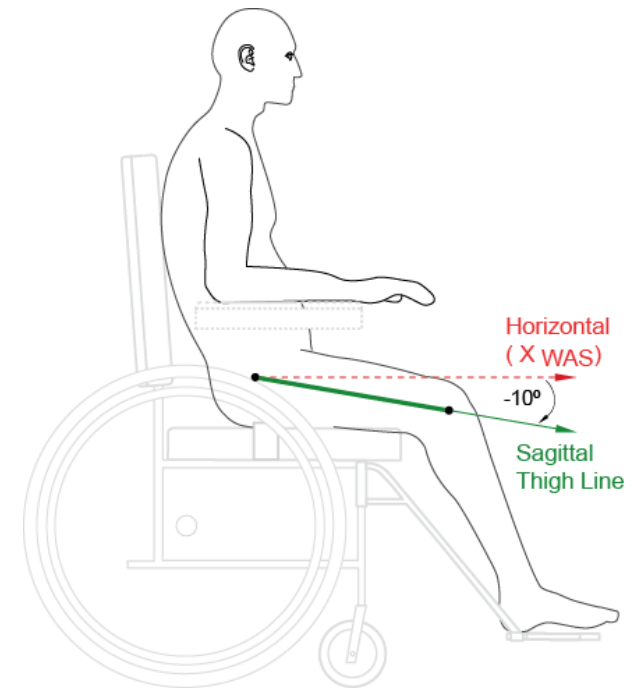
Sagittal Body Segment Angles



SAGITTAL TRUNK ANGLE

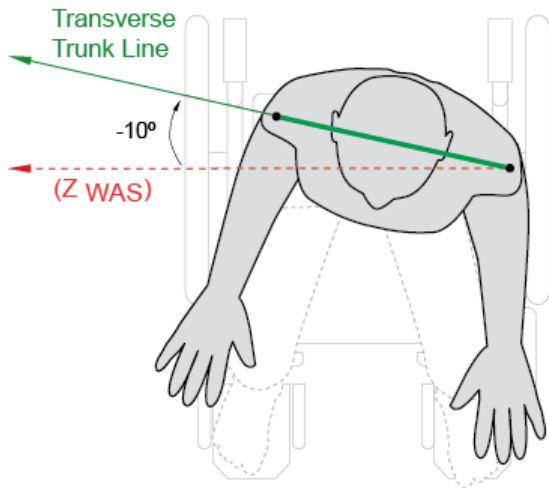


SAGITTAL PELVIC ANGLE

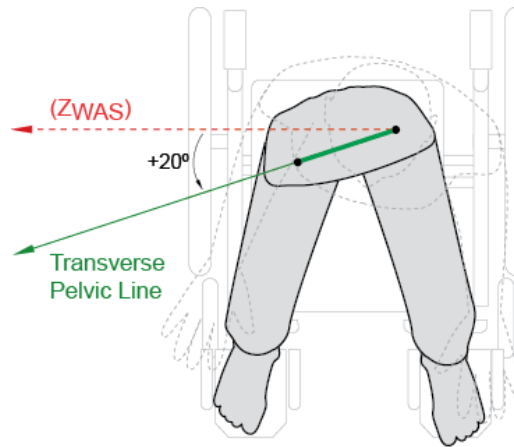


SAGITTAL THIGH ANGLE

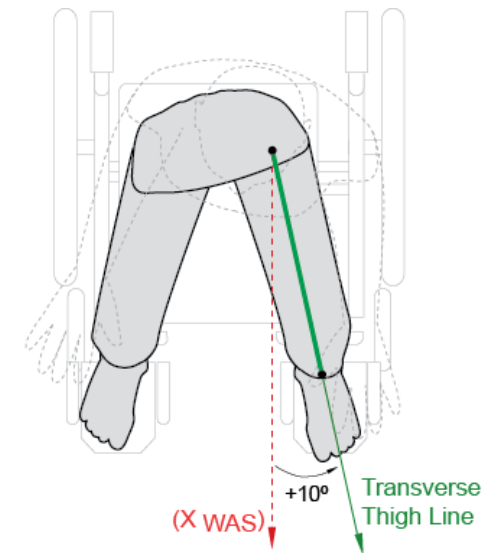
Transverse Body Segment Angles



TRANSVERSE TRUNK ANGLE

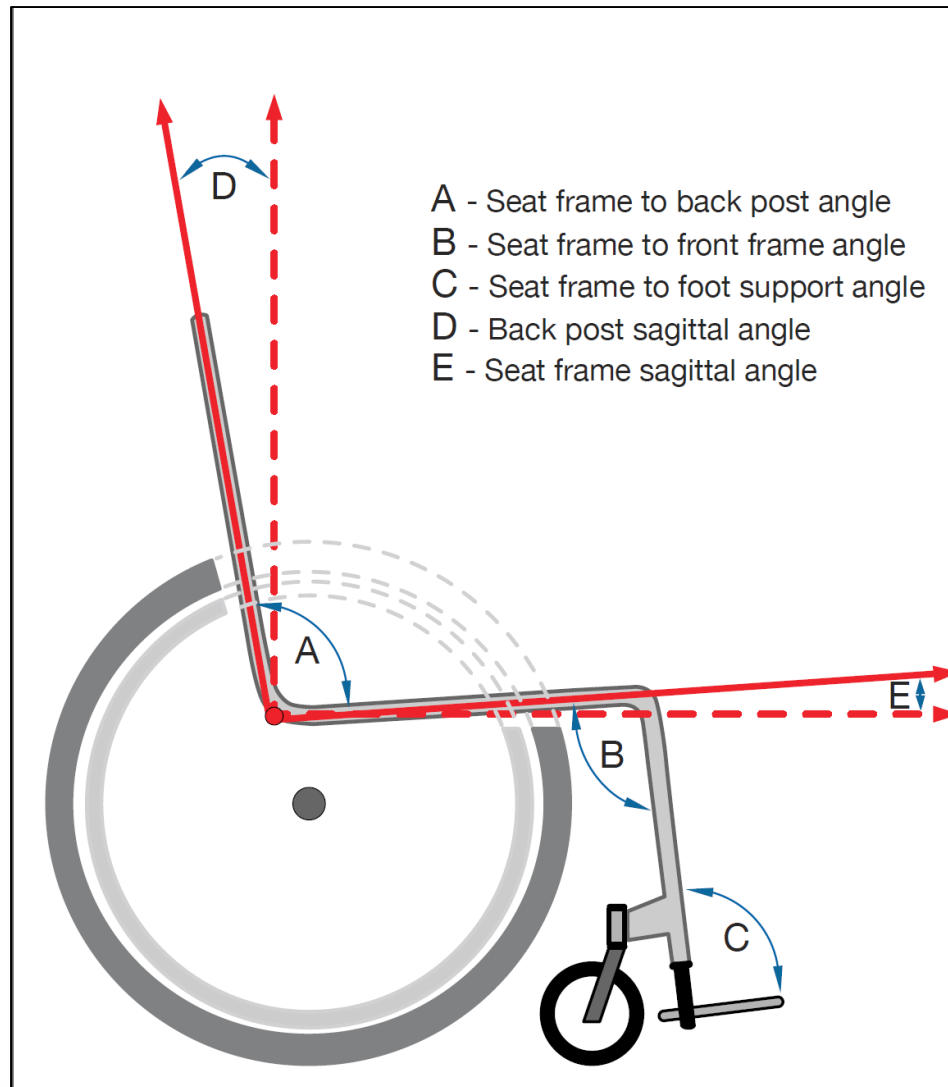


TRANSVERSE PELVIC ANGLE



TRANSVERSE THIGH ANGLE

Basic angular measures of the wheelchair frame



Wheelchair Frame Angles

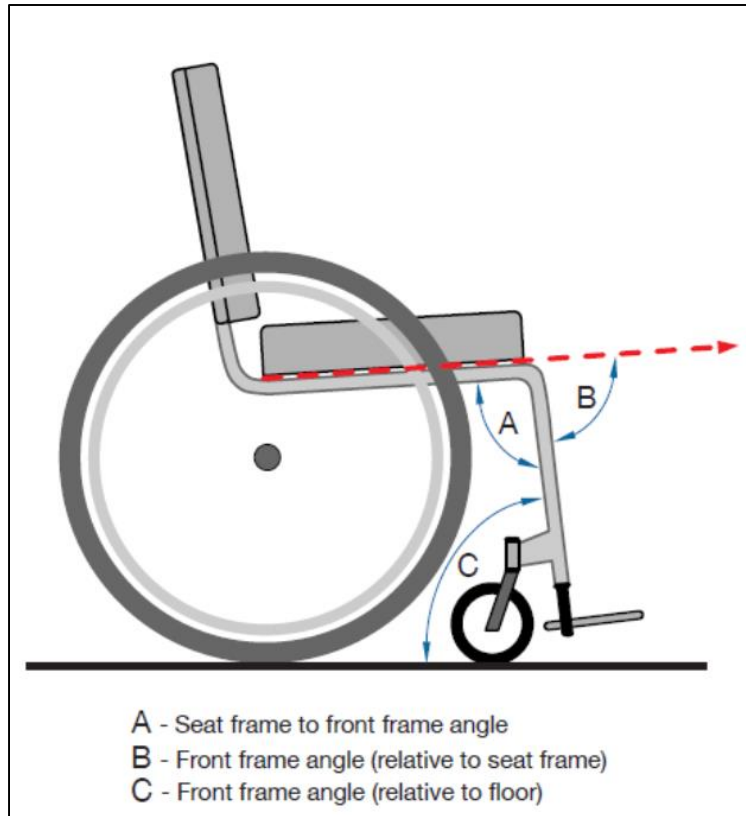


Fig 1: Different ways to measure the front frame angle in a rigid frame MWC

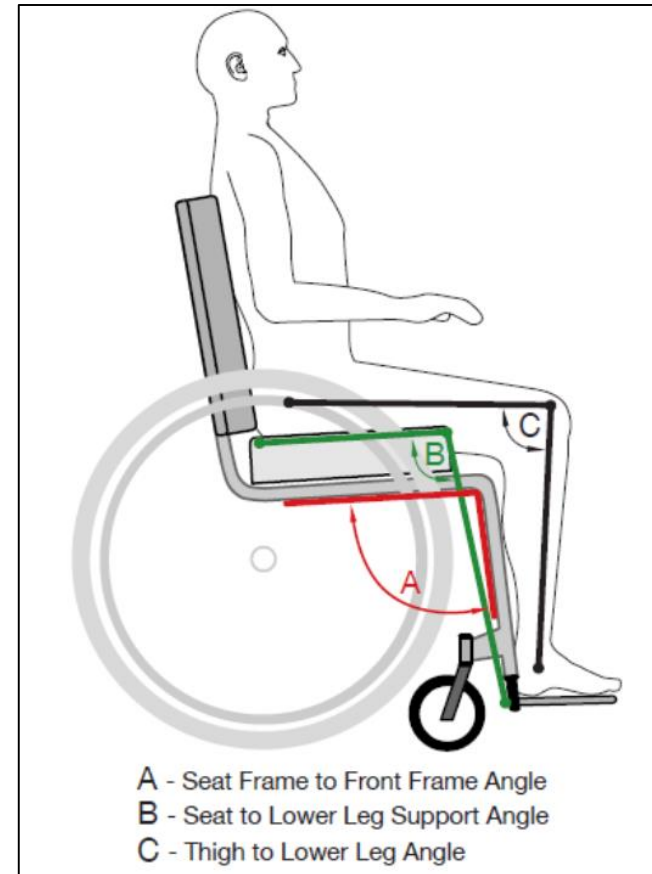
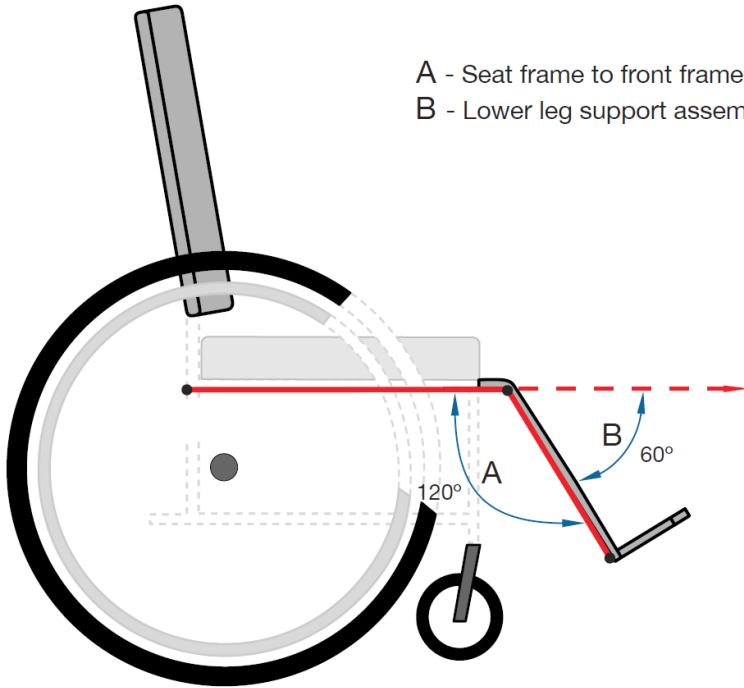


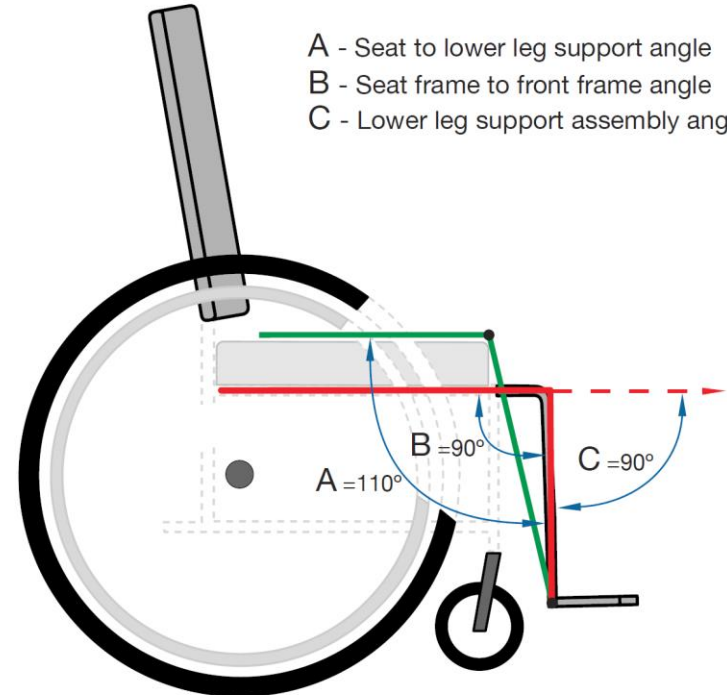
Fig 2: Corresponding frame, seating and body angles

Wheelchair Frame Angles

A - Seat frame to front frame angle
B - Lower leg support assembly angle



A - Seat to lower leg support angle
B - Seat frame to front frame angle
C - Lower leg support assembly angle



Swing away lower leg support assemblies, aka “legrest hangers”, come in 60-70-80-90 degree styles

(4) Lange, M. and Minkel, J. *Seating and Wheeled Mobility-A Clinical Resource Guide*



Center for Inclusive Design and Engineering (CIDE)
COLLEGE OF ENGINEERING, DESIGN AND COMPUTING
UNIVERSITY OF COLORADO DENVER | ANSCHUTZ MEDICAL CAMPUS